

SPR Sensor Chips

By Platypus Technologies

Pioneering new frontiers in chemical and biotech measurements



The scientists at Platypus Technologies have developed an array of bare gold biosensor chips for Surface Plasmon Resonance (SPR).

The SPR chips by Platypus enable researchers to investigate molecular and cellular interactions in fields such as molecular biology, cell biology, immunology, biochemistry and many others. Since all Platypus SPR chips use 99.999% pure gold, our chips provide **greater sensitivity**, **better specificity**, **excellent compatibility for further surface functionalization and custom film thickness**.

Cross Platform
Compatibility
with Imaging &
Non-imaging
SPR Instruments

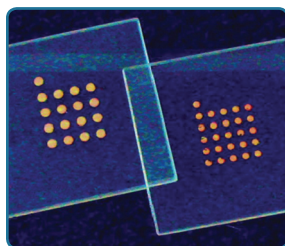
SPR Sensor Chips Offered By Platypus



Bare Gold SPR Chips

Platypus bare gold SPR chips do not require any extra chemicals to facilitate immobilization. These chips are made from highly sensitive nano-gold films (30nm-50nm) on high optical quality glass. These high purity gold films generate intense localized SPR absorbance in the visible spectrum. The surface can also be easily functionalized for a variety of applications

Product number: [AU.0500.ALSI](#), [AU.0500.CSS](#), and [SPR-1000-050](#)

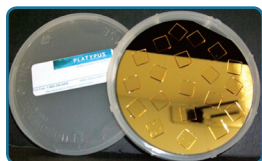


SpotReady™ Chips

SpotReady™ chip has gold spots arranged in a grid pattern, and each spot is surrounded by a hydrophobic background layer. This surface allows for easy spotting of probes onto individual spots, using the micropipets you already own. The hydrophobic surrounding deters aqueous probe solution from flowing over the edge of the gold spot.

Product number: [SPR-1000-016](#)

Other Gold Thin Film Substrates by Platypus



Ultra-flat Gold Films

- 100 nm on glass
- 200 nm on glass



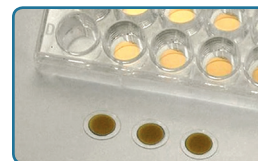
Silicon Wafers

- 100 nm gold film



Mica

- 200 nm gold film



Coverslips

- 22 mm square
- 15 mm round



Pioneering new frontiers
in chemical and biotech
measurements

Ordering Information:

Call 1.866.296.4455 • Fax 608.237.1271
orders@platypustech.com

